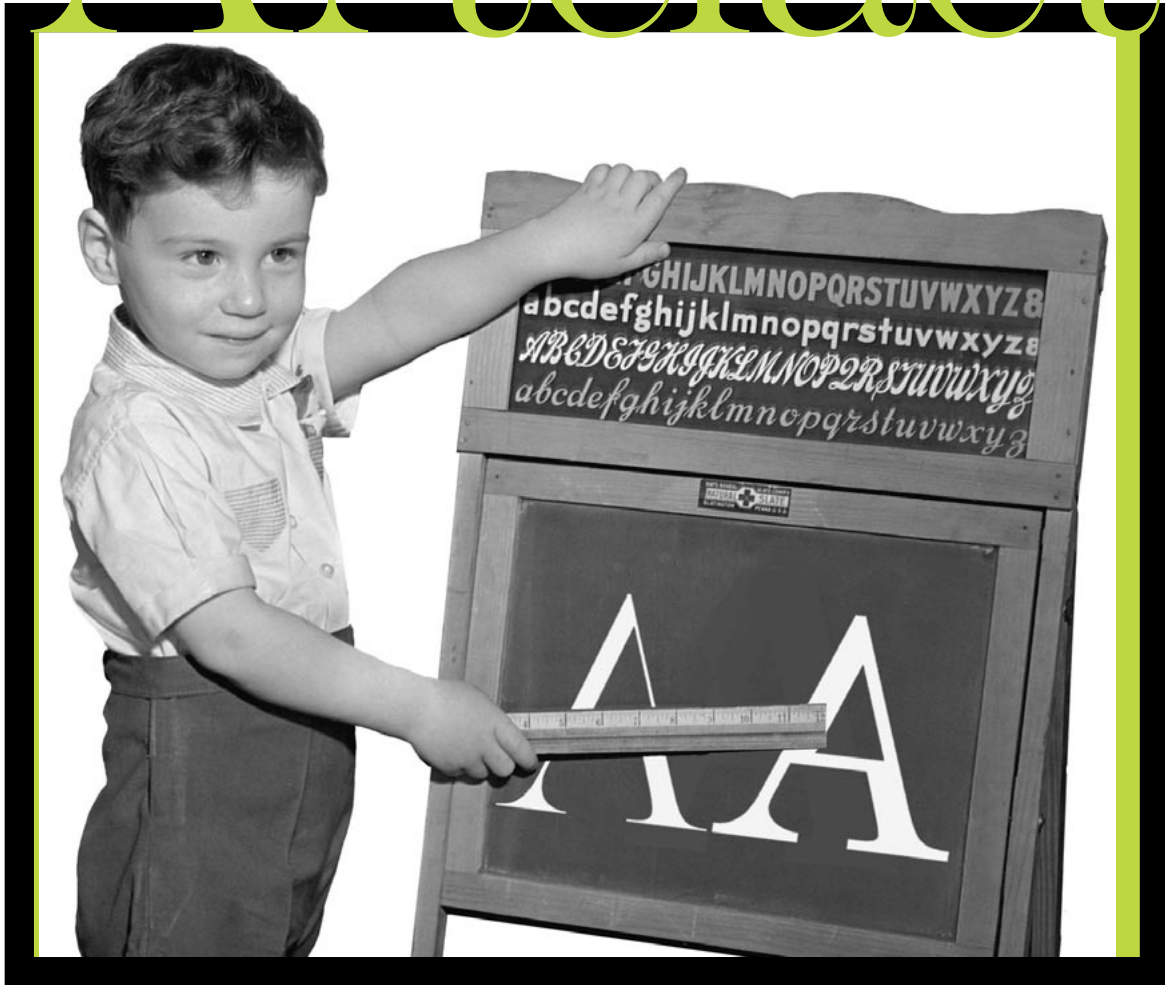


# Artefact



**Shinntype**

Artefact Light  
Artefact Regular  
Artefact Bold

# Artefact

Literally and playfully Post-modern, Shinn deconstructs the 19th century Modern (Didone) style to question the conventions of stress inherited from earlier, calligraphically-informed types, governing the acceptability of which stems are thick, which are thin. With the Didone vocabulary artfully rephrased, a novel typographic color of corroded notan emerges.



---

THE HISTORY  
OF THE TOWN  
is reflected in  
its monuments

Die Geschichte der Stadt  
versinnbildlicht sich  
in ihren Denkmälern



L'histoire de la ville  
est symbolisée  
dans les monuments

---

ARTEFACT LIGHT

A B C D E F G H I

J K L M N O P Q R

S T U V W X Y Z

a b c d e f g h i j k l m n

o p q r s t u v w x y z

1 2 3 4 5 6 7 8 9 0

---

ARTEFACT REGULAR

A B C D E F G H I

J K L M N O P Q R

S T U V W X Y Z

a b c d e f g h i j k l m n

o p q r s t u v w x y z

1 2 3 4 5 6 7 8 9 0

---

ARTEFACT BOLD

A B C D E F G H I  
J K L M N O P Q R  
S T U V W X Y Z  
a b c d e f g h i j k l m n  
o p q r s t u v w x y z  
1 2 3 4 5 6 7 8 9 0

---

full character set

ABCDEFGHIJKLMNOPQRSTUVWXYZ  
#0123456789  
abcdefghijklmnopqrstuvwxyz  
nopqrstuvwxyz  
@áàâãäåæçéèêëfifl  
íîïñóòôõöœßúùûü  
ÁÀÂÃÄÅÆÇÉÈÊË  
ÌÎÏÑÓÒÔÕÖŒÚÙÛÜ  
a o T M • . , ; : - - - - ? !  
[ , , « “ ” » , < “ ” > ] ¶ \* † ‡ §  
( € \$ £ ¥ ¢ ) & © ® \ | / ¡ ¢  
{ = + ± ÷ < > % ‰ μ ° }  
/ \ ^ . ~ ° “ ” . ~ -